

Bis(2-hydroxyethaniminium) tetrachloridopalladate(II)

Ilia A. Guzei,^{a,b*} Lara C. Spencer,^a Margaret Yankey^b and James Darkwa^b

^aDepartment of Chemistry, University of Wisconsin-Madison, 1101 University Ave, Madison, WI 53706, USA, and ^bDepartment of Chemistry, University of Johannesburg, Auckland Park Kingsway Campus, Auckland Park 2006, South Africa
Correspondence e-mail: iguzei@chem.wisc.edu

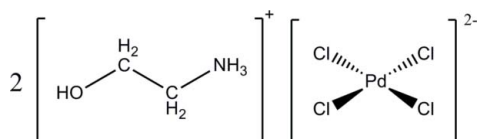
Received 26 October 2010; accepted 5 November 2010

Key indicators: single-crystal X-ray study; $T = 100$ K; mean $\sigma(\text{C}-\text{C}) = 0.002$ Å; R factor = 0.012; wR factor = 0.028; data-to-parameter ratio = 29.9.

In the title compound, $(\text{C}_2\text{H}_8\text{NO})_2[\text{PdCl}_4]$, 2-hydroxyethaniminium cations and tetrachloridopalladate(II) dianions crystallize in a 2:1 ratio with the anion residing on a crystallographic inversion center. The cations and anions are linked in a complex three-dimensional framework by three types of strong hydrogen bonds ($\text{N}-\text{H}\cdots\text{O}$, $\text{N}-\text{H}\cdots\text{Cl}$, and $\text{O}-\text{H}\cdots\text{Cl}$), which form various ring and chain patterns of up to the ternary graph-set level.

Related literature

For the hydrolysis of imines in Schiff base first-row transition metal complexes, see: Chattopadhyay *et al.* (2007); Czaun *et al.* (2010); Guzei *et al.* (2010); Lee *et al.* (1948). For the use of Schiff base first-row transition metal complexes as amine protecting groups, see: Deng *et al.* (2002); Kurita (2001); Shelley *et al.* (1999). For geometrical parameter checks, see: Bruno *et al.* (2004). For R factor comparisons, see: Allen (2002). For graph-set notation, see: Bernstein *et al.* (1995).



Experimental

Crystal data

$(\text{C}_2\text{H}_8\text{NO})_2[\text{PdCl}_4]$	$V = 609.78$ (5) Å ³
$M_r = 372.39$	$Z = 2$
Monoclinic, $P2_1/c$	Mo $K\alpha$ radiation
$a = 8.9401$ (4) Å	$\mu = 2.37$ mm ⁻¹
$b = 8.1621$ (4) Å	$T = 100$ K
$c = 8.5921$ (4) Å	$0.30 \times 0.10 \times 0.06$ mm
$\beta = 103.445$ (2)°	

Data collection

Bruker SMART APEXII area-detector diffractometer	14744 measured reflections
Absorption correction: analytical (<i>SADABS</i> ; Bruker, 2001)	1851 independent reflections
$T_{\min} = 0.536$, $T_{\max} = 0.871$	1769 reflections with $I > 2\sigma(I)$
	$R_{\text{int}} = 0.024$

Refinement

$R[F^2 > 2\sigma(F^2)] = 0.012$	62 parameters
$wR(F^2) = 0.028$	H-atom parameters constrained
$S = 0.98$	$\Delta\rho_{\text{max}} = 0.43$ e Å ⁻³
1851 reflections	$\Delta\rho_{\text{min}} = -0.50$ e Å ⁻³

Table 1

Selected geometric parameters (Å, °).

Pd1—Cl2	2.3074 (2)	Pd1—Cl1	2.3119 (3)
Cl2 ⁱ —Pd1—Cl1	89.409 (8)	Cl2—Pd1—Cl1	90.591 (9)

Symmetry code: (i) $-x + 2, -y + 2, -z + 1$.

Table 2

Hydrogen-bond geometry (Å, °).

$D-\text{H}\cdots A$	$D-\text{H}$	$\text{H}\cdots A$	$D\cdots A$	$D-\text{H}\cdots A$
$\text{N1}-\text{H1A}\cdots\text{O1}^{\text{ii}}$	0.91	1.97	2.8370 (12)	158
$\text{O1}-\text{H1}\cdots\text{Cl1}^{\text{iii}}$	0.84	2.35	3.1869 (8)	179
$\text{N1}-\text{H1C}\cdots\text{Cl2}$	0.91	2.30	3.2048 (9)	170

Symmetry codes: (ii) $-x + 1, -y + 1, -z + 1$; (iii) $x, y - 1, z$.

Data collection: *APEX2* (Bruker, 2007); cell refinement: *SAINT* (Bruker, 2007); data reduction: *SAINT*; program(s) used to solve structure: *SHELXTL* (Sheldrick, 2008); program(s) used to refine structure: *SHELXTL*, *OLEX2* (Dolomanov *et al.*, 2009) and *FCF_filter* (Guzei 2007); molecular graphics: *SHELXTL* and *DIAMOND* (Brandenburg, 2009); software used to prepare material for publication: *SHELXTL*, *pubCIF* (Westrip, 2010) and *modiCIFer* (Guzei, 2007).

Supplementary data and figures for this paper are available from the IUCr electronic archives (Reference: NK2068).

References

- Allen, F. H. (2002). *Acta Cryst.* **B58**, 380–388.
 Bernstein, J., Davis, R. E., Shimon, L. & Chang, N.-L. (1995). *Angew. Chem. Int. Ed. Engl.* **34**, 1555–1573.
 Brandenburg, K. (2009). *DIAMOND*. Crystal Impact GbR, Bonn, Germany.
 Bruker (2001). *SADABS*. Bruker AXS Inc., Madison, Wisconsin, USA.
 Bruker (2007). *APEX2* and *SAINT*. Bruker AXS Inc., Madison, Wisconsin, USA.
 Bruno, I. J., Cole, J. C., Kessler, M., Luo, J., Motherwell, W. D. S., Purkis, L. H., Smith, B. R., Taylor, R., Cooper, R. I., Harris, S. E. & Orpen, A. G. (2004). *J. Chem. Inf. Comput. Sci.* **44**, 2133–2144.
 Chattopadhyay, S., Brew, M. D. G. & Gosh, A. (2007). *Polyhedron*, **26**, 3513–3522.
 Czaun, M., Nelana, S. M., Hasselgren, C., Jagner, S., Oskarsson, A., Lisensky, G., Darkwa, J. & Nordlander, E. (2010). *Inorg. Chim. Acta*, **363**, 3002–3112.
 Deng, W.-P., Wong, K. A. & Kirk, K. L. (2002). *Tetrahedron Asymmetry*, **13**, 1135–1140.
 Dolomanov, O. V., Bourhis, L. J., Gildea, R. J., Howard, J. A. K. & Puschmann, H. (2009). *J. Appl. Cryst.* **42**, 339–341.

- Guzei, I. A. (2007). In-house Crystallographic Programs: *FCF_filter*, *modiCIFer*. Molecular Structure Laboratory, University of Wisconsin-Madison, Madison, Wisconsin, USA.
- Guzei, I. A., Spencer, L. C., Ainooson, M. K. & Darkwa, J. (2010). *Acta Cryst. C66*, m89–m96.
- Kurita, K. (2001). *Prog. Polym. Sci.* **26**, 1921–1971.
- Lee, T. S., Kolthoff, I. M. & Leussing, D. L. (1948). *J. Am. Chem. Soc.* **70**, 3596–3600.
- Sheldrick, G. M. (2008). *Acta Cryst.* **A64**, 112–122.
- Shelley, M. D., Hartley, L., Fish, R. G., Groundwater, P., Morgan, J. J. G., Mort, D., Mason, M. & Evans, A. (1999). *Cancer Lett.* **135**, 171–180.
- Westrip, S. P. (2010). *J. Appl. Cryst.* **43**, 920–925.

supplementary materials

Acta Cryst. (2010). E66, m1551-m1552 [doi:10.1107/S1600536810045435]

Bis(2-hydroxyethanaminium) tetrachloridopalladate(II)

I. A. Guzei, L. C. Spencer, M. Yankey and J. Darkwa

Comment

Hydrolysis of imines in Schiff base first row transition metal complexes is now common (Chattopadhyay *et al.* 2007, Czaun *et al.*, 2010; Guzei *et al.*, 2010; Lee *et al.*, 1948) These metal complexes have been used to protect amines by first converting them to imines followed by metal assisted hydrolysis back to the amine (Deng *et al.*, 2002; Kurita, 2001; Shelley *et al.*, 1999). However, hydrolysis of imines by second row transition metal complexes is very rare. In an attempt to use 2,4-di-*tert*-butyl-6-[(2-hydroxyethylimino)methyl]phenol to prepare a palladium complex, we isolated the ammonium chloride salt of tetrachloropalladate, $[\text{C}_2\text{H}_8\text{NO}]_2^+[\text{PdCl}_4]^{2-}$, a result of the hydrolysis of the imine ligand.

The ionic title compound (I) consists of bis(2-hydroxyethanaminium) cations and tetrachloro-palladium(II) dianions in a 2:1 ratio. The tetrachloro-palladium(II) dianion resides on a crystallographic inversion center. The geometrical parameters of (I) are typical as confirmed by a *Mogul* geometrical check (Bruno *et al.*, 2004). Three types of hydrogen bonds, N1—H1A...O1,(a), N1—H1C...Cl2,(b), and O1—H1...Cl1,(c) form a three dimensional framework. The most easily visualized graph set motifs in the network include the primary ring pattern $R^2_2(10)$ a->a->, three different secondary patterns formed by bonds b and c, the chain $C^2_2(9)$ b \rightarrow c \leftarrow , the chain $C^4_4(18)$ b \rightarrow c \leftarrow c \leftarrow and the ring $R^4_4(18)$ b \rightarrow c \leftarrow b \rightarrow c \leftarrow , and the ternary chain pattern $C^3_3(8)$ a \rightarrow c \rightarrow b \leftarrow (Bernstein *et al.*, 1995).

The *R*-factor of the structural determination of (I) is a mere 1.18%. Data mining of the Cambridge Structural Database (Cambridge Structural Database, CSD, version 1.12, August 2010 update; Allen, 2002) found only 113 reported structural determinations with lower *R*-factors. This extremely low *R*-factor along with the unusually low standard uncertainties on the bond distances (fourth decimal place) and angles (third decimal place) are indicative of the high precision of this structure.

Experimental

A solution of $[\text{PdCl}_2(\text{NCMe})_2]$ (0.11 g, 0.429 mmol) in dichloromethane (5 ml) was added to a solution of 2,4-di-*tert*-butyl-6-[(2-hydroxy-ethylimino)methyl]-phenol (0.12 g, 0.429 mmol) in dichloromethane (5 ml). The mixture was stirred at room temperature for 16 h, filtered, and the filtrate evaporated to dryness. Recrystallization of the residue from dichloromethane-hexane gave brown crystals over several days. Yield: 0.10 g (58%).

Refinement

All H-atoms were placed in idealized locations with an O—H distance of 0.84 Å, N—H distances of 0.91 Å, and C—H distances of 0.99 Å. All H-atoms were refined as riding with appropriate thermal displacement coefficients $U_{\text{iso}}(\text{H}) = 1.5$ times $U_{\text{eq}}(\text{bearing atom})$ for the hydrogen atoms attached to oxygen atoms or 1.2 times $U_{\text{eq}}(\text{bearing atom})$ for all hydrogen atoms attached to nitrogen or carbon atoms.

Figures



Fig. 1. Molecular structure of (I). The thermal ellipsoids are shown at 50% probability level. Hydrogen bonds are shown with dashed lines. Symmetry transformations used to generate equivalent atoms: (i) $-x + 2, -y + 2, -z + 1$.

Bis(2-hydroxyethanaminium) tetrachloridopalladate(II)

Crystal data

$(C_2H_8NO)_2[PdCl_4]$	$F(000) = 368$
$M_r = 372.39$	$D_x = 2.028 \text{ Mg m}^{-3}$
Monoclinic, $P2_1/c$	Mo $K\alpha$ radiation, $\lambda = 0.71073 \text{ \AA}$
Hall symbol: $-P 2ybc$	Cell parameters from 9951 reflections
$a = 8.9401 (4) \text{ \AA}$	$\theta = 3.4\text{--}30.6^\circ$
$b = 8.1621 (4) \text{ \AA}$	$\mu = 2.37 \text{ mm}^{-1}$
$c = 8.5921 (4) \text{ \AA}$	$T = 100 \text{ K}$
$\beta = 103.445 (2)^\circ$	Block, orange
$V = 609.78 (5) \text{ \AA}^3$	$0.30 \times 0.10 \times 0.06 \text{ mm}$
$Z = 2$	

Data collection

Bruker SMART APEXII area-detector diffractometer	1769 reflections with $I > 2\sigma(I)$
mirror optics	$R_{\text{int}} = 0.024$
$0.60^\circ \omega$ and $0.6^\circ \varphi$ scans	$\theta_{\text{max}} = 30.6^\circ$, $\theta_{\text{min}} = 3.4^\circ$
Absorption correction: analytical (<i>SADABS</i> ; Bruker, 2001)	$h = -12 \rightarrow 12$
$T_{\text{min}} = 0.536$, $T_{\text{max}} = 0.871$	$k = -11 \rightarrow 11$
14744 measured reflections	$l = -12 \rightarrow 12$
1851 independent reflections	

Refinement

Refinement on F^2	Primary atom site location: structure-invariant direct methods
Least-squares matrix: full	Secondary atom site location: difference Fourier map
$R[F^2 > 2\sigma(F^2)] = 0.012$	Hydrogen site location: inferred from neighbouring sites
$wR(F^2) = 0.028$	H-atom parameters constrained
$S = 0.98$	$w = 1/[\sigma^2(F_o^2) + (0.0111P)^2 + 0.3119P]$
1851 reflections	where $P = (F_o^2 + 2F_c^2)/3$
62 parameters	$(\Delta/\sigma)_{\text{max}} = 0.001$
0 restraints	$\Delta\rho_{\text{max}} = 0.43 \text{ e \AA}^{-3}$
	$\Delta\rho_{\text{min}} = -0.50 \text{ e \AA}^{-3}$

Special details

Refinement. Refinement of F^2 against ALL reflections. The weighted R -factor wR and goodness of fit S are based on F^2 , conventional R -factors R are based on F , with F set to zero for negative F^2 . The threshold expression of $F^2 > \sigma(F^2)$ is used only for calculating R -factors(gt) *etc.* and is not relevant to the choice of reflections for refinement. R -factors based on F^2 are statistically about twice as large as those based on F , and R -factors based on ALL data will be even larger.

Fractional atomic coordinates and isotropic or equivalent isotropic displacement parameters (\AA^2)

	x	y	z	$U_{\text{iso}}^*/U_{\text{eq}}$
Pd1	1.0000	1.0000	0.5000	0.00979 (3)
Cl1	0.73683 (3)	0.96899 (3)	0.46100 (3)	0.01355 (5)
Cl2	1.04022 (3)	0.81392 (3)	0.70777 (3)	0.01331 (5)
O1	0.57008 (9)	0.31533 (9)	0.44982 (9)	0.01677 (15)
H1	0.6147	0.2245	0.4527	0.025*
N1	0.74116 (10)	0.59194 (11)	0.58009 (10)	0.01328 (16)
H1A	0.6491	0.6449	0.5570	0.016*
H1C	0.8177	0.6650	0.6185	0.016*
H1B	0.7404	0.5135	0.6552	0.016*
C1	0.62509 (12)	0.42371 (14)	0.34444 (12)	0.01645 (19)
H1E	0.5438	0.5041	0.2987	0.020*
H1D	0.6487	0.3600	0.2551	0.020*
C2	0.76792 (13)	0.51374 (13)	0.43181 (13)	0.01585 (19)
H2A	0.8549	0.4359	0.4604	0.019*
H2B	0.7951	0.5988	0.3610	0.019*

Atomic displacement parameters (\AA^2)

	U^{11}	U^{22}	U^{33}	U^{12}	U^{13}	U^{23}
Pd1	0.00874 (5)	0.00986 (5)	0.01049 (5)	0.00005 (3)	0.00164 (3)	-0.00051 (3)
Cl1	0.01008 (10)	0.01379 (10)	0.01650 (11)	0.00018 (8)	0.00250 (8)	0.00104 (8)
Cl2	0.01270 (10)	0.01301 (10)	0.01342 (10)	-0.00109 (8)	0.00143 (8)	0.00129 (7)
O1	0.0146 (3)	0.0126 (3)	0.0239 (4)	0.0011 (3)	0.0062 (3)	0.0002 (3)
N1	0.0124 (4)	0.0126 (4)	0.0146 (4)	-0.0007 (3)	0.0028 (3)	0.0006 (3)
C1	0.0148 (4)	0.0202 (5)	0.0141 (4)	0.0002 (4)	0.0029 (4)	-0.0009 (4)
C2	0.0136 (4)	0.0199 (5)	0.0153 (4)	-0.0011 (4)	0.0059 (4)	-0.0009 (4)

Geometric parameters (\AA , $^\circ$)

Pd1—Cl2	2.3074 (2)	N1—H1B	0.9100
Pd1—Cl1	2.3119 (3)	C1—C2	1.5127 (15)
O1—C1	1.4322 (13)	C1—H1E	0.9900
O1—H1	0.8400	C1—H1D	0.9900
N1—C2	1.4932 (13)	C2—H2A	0.9900
N1—H1A	0.9100	C2—H2B	0.9900
N1—H1C	0.9100		
Cl2 ⁱ —Pd1—Cl1	89.409 (8)	C2—C1—H1E	109.4

supplementary materials

Cl2—Pd1—C11	90.591 (9)	O1—C1—H1D	109.4
C1—O1—H1	109.5	C2—C1—H1D	109.4
C2—N1—H1A	109.5	H1E—C1—H1D	108.0
C2—N1—H1C	109.5	N1—C2—C1	110.29 (8)
H1A—N1—H1C	109.5	N1—C2—H2A	109.6
C2—N1—H1B	109.5	C1—C2—H2A	109.6
H1A—N1—H1B	109.5	N1—C2—H2B	109.6
H1C—N1—H1B	109.5	C1—C2—H2B	109.6
O1—C1—C2	111.14 (8)	H2A—C2—H2B	108.1
O1—C1—H1E	109.4		
O1—C1—C2—N1	-51.28 (11)		

Symmetry codes: (i) $-x+2, -y+2, -z+1$.

Hydrogen-bond geometry ($\text{\AA}, ^\circ$)

$D-H\cdots A$	$D-H$	$H\cdots A$	$D\cdots A$	$D-H\cdots A$
N1—H1A \cdots O1 ⁱⁱ	0.91	1.97	2.8370 (12)	158
O1—H1 \cdots Cl1 ⁱⁱⁱ	0.84	2.35	3.1869 (8)	179
N1—H1C \cdots Cl2	0.91	2.30	3.2048 (9)	170

Symmetry codes: (ii) $-x+1, -y+1, -z+1$; (iii) $x, y-1, z$.

